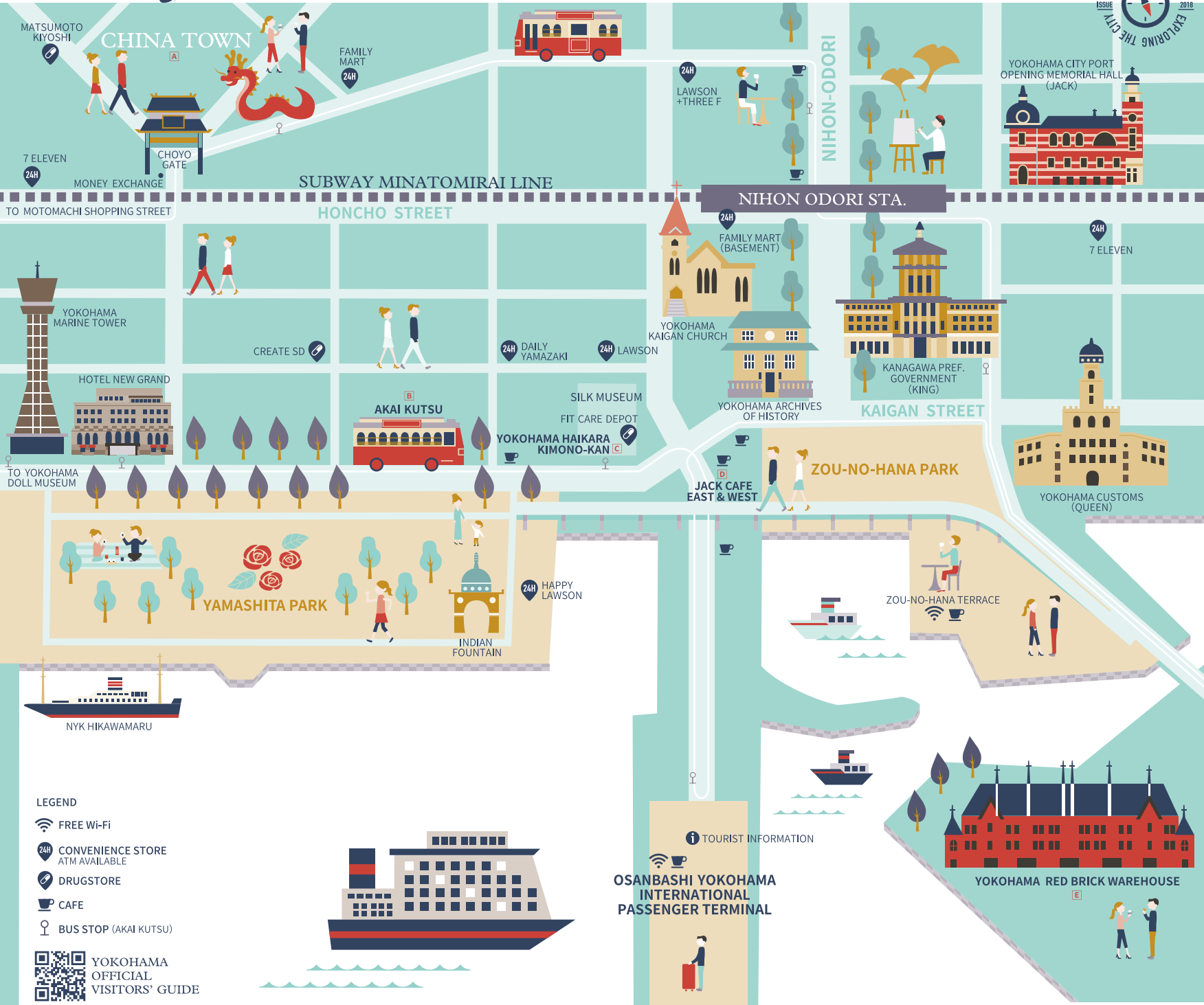


Hello! Yokohama

CRUISE PASSENGER MAP



LEGEND

- FREE Wi-Fi
- 24H CONVENIENCE STORE
ATM AVAILABLE
- DRUGSTORE
- CAFE
- BUS STOP (AKAI KUTSU)

YOKOHAMA OFFICIAL VISITORS' GUIDE

Eat!
YOKOHAMA CHINA TOWN A
横浜中華街

Yokohama boasts one of the world's largest China Towns full of many attractions. There are over 500 restaurants, souvenir and variety shops in a square area roughly 500m wide. Enjoy a piping-hot steamed pork bun from one of the many shop fronts.



Move!
AKAI KUTSU B
あかいくつ

A convenient bus circling Sakuragicho Station, the Red Brick Warehouses and Yokohama China Town areas. Adult fares are ¥220. If you have a one-day Minato Burari Ticket (Adult fare ¥500), you may ride the bayarea municipal subway and buses (including the Akai Kutsu).



Do!
YOKOHAMA HAIKARA KIMONO-KAN
横浜ハイカラきもの館 C

Offers one-day kimono rentals. Choose from a range of about 50 kimonos and let the staff dress you. Even if you're unfamiliar with kimonos, the specially trained staff offers good advice for peace of mind. Enjoy a stroll around the bay area in your kimono afterwards.



Eat!
JACK CAFE EAST & WEST D
ジャック・カフェ

Both the West and East stores of Jack Cafe offer various meals in the theme of an American Diner from the 50s. Spend your time leisurely viewing the Kaikou Plaza from an open terrace seat.



Eat! Shop!
YOKOHAMA RED BRICK WAREHOUSE
横浜赤レンガ倉庫 E

A shopping facility inside a renovated, historical brick warehouse. Enjoy shopping and a meal inside and various events outside. The lighting in the evening creates a magical atmosphere.



Hello! Yokohama

CRUISE PASSENGER MAP



LEGEND

- FREE WI-FI
- CONVENIENCE STORE
ATM AVAILABLE
- DRUGSTORE
- CAFE
- BUS STOP
(AKAI KUTSU)



YOKOHAMA NOH-THEATER

ISEYAMA KOTAI-JINGU SHRINE

YOKOHAMA NIGIWAIZAI

NOGE

See! Do! **MEGUMI SUISAN (SUSHI)**
めぐみ水産 (廻転寿司)



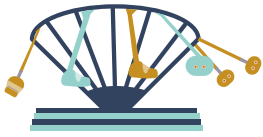
A conveyor belt sushi restaurant where you can enjoy tuna of the highest grade and quality, selected from a well-established wholesaler. This store's specialty is their tuna slicing show, held every Saturday, where you can watch the fish become sushi right in front of your eyes. Enjoy other fresh sushi too, at reasonable prices.

Do! **KAIKOH-AN (TEA CEREMONY)**
開光庵 (お茶体験)



Sado (tea ceremony) lies at the heart of Japanese culture. Experience Sado in the tearoom on the 65th floor of Yokohama Cosmo World. Instructors carefully explain tea ceremony manners to beginners. The room offers unbroken views of the bay area, and if the weather is good, you may even catch a glimpse of Mt. Fuji.

Do! **YOKOHAMA COSMO WORLD**
コスモワールド



At 112.5m, Cosmo Clock 21 is the world's largest Ferris wheel with a clock, and also a symbol of the bayside area. You'll find it situated inside Yokohama Cosmo World for you to enjoy with roughly 30 other attractions, including a jet coaster and water ride.

Do! **MANYO CLUB (HOT SPRING)**
万葉倶楽部



An open, spacious public bath, and onsen (hot springs) facility where you can enjoy outdoor baths and saunas. The rooftop footbath comes highly recommended with its sweeping night views of Yokohama. Change into a relaxing yukata (a light kimono) and unwind indoors. The facility also offers places to eat and lodgings.

Eat! **CUPNOODLES MUSEUM**
カップヌードルミュージアム



A museum with various activities and exhibitions for you to experience the creative thinking of Momofuku Andou, founder of Nissin Foods and inventor of the world's first instant ramen noodles. The corner where you can make your own original cup noodles is popular. Enjoy noodles from eight different countries worldwide at Noodles Bazaar.