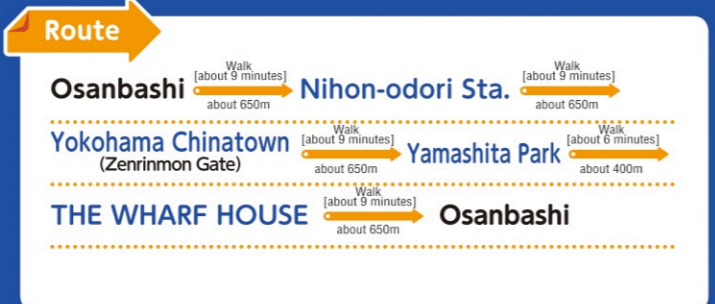


Nihon-odori ~
Osanbashi Tour Course

Yokohama Chinatown Enjoy Course

This course leads from Osanbashi, the gateway to Yokohama, to Yokohama Chinatown via Nihon-Odori avenue. You can also enjoy a footbath and purchase souvenirs while enjoying a view of the harbor at Yamashita Park.



Hint
This course is a series of gentle paths with no hills, and the paths are wide enough to allow visitors to enjoy themselves with peace of mind.

START GOAL

Wheelchairs (5 available; 09:00-16:30) are available for rent to users of the Yamashita Park parking lot.

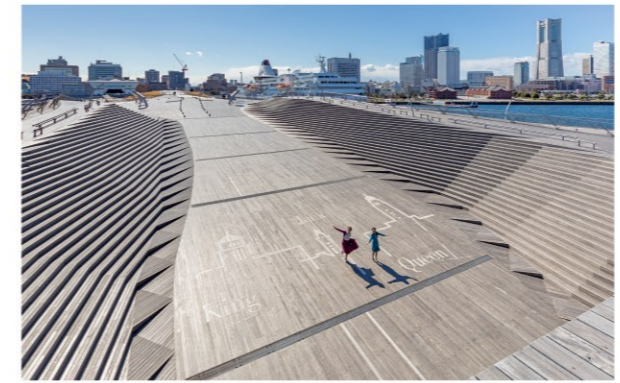
Chukagai-Odori avenue is a car-free zone during the daytime (12:00 to 20:00). There are accessible restrooms at both ends of the street.

Legend:
 ☺ Toilets / wheelchair
 🛗 Elevator
 🏨 Hotel
 ⓘ Information
 ♿ Barrier-free
 🏠 Mindset-certified facility

Osanbashi

OSANBASHI YOKOHAMA INTERNATIONAL PASSENGER TERMINAL

Required time
45
minutes



This passenger terminal is the gateway to the Port of Yokohama, welcoming people from all over the world, and is a port of call for both large foreign and domestic passenger ships. The rooftop plaza is an open space with natural grass and a wood deck finish reminiscent of a ship's deck.

☎ **045-211-2304**
 ¥ Free admission
 ⌚ 09:00 to 21:00 (Inside the terminal)
 The rooftop is open 24 hours a day

All levels of the building are designed to be accessible and connected by ramps. Strollers and wheelchairs are available to rent for free at the information counter, and you can also test ride the WHILL electric wheelchair.

Nihon-odori Sta.

Yokohama Chinatown

Required time
60
minutes



Only in Yokohama Chinatown can you enjoy a wide variety of Chinese cuisine in just one area, including Cantonese, Szechuan, Peking, and Shanghai-style cuisine, rice porridge and home-style cooking. With a full range of experiences, such as fortune-telling, shopping and more, you can enjoy Chinese culture with all five senses.

¥ Free admission ⌚ Differs depending on the store
 ☒ Differs depending on the store

There is a public accessible restroom near the Cho-yo-mon (Chinatown East) Gate. Other information varies from store to store, so please inquire at the applicable store.

Yamashita Park

Required time
45
minutes



The view of Yokohama Bay Bridge and ships passing each other in the harbor is romantic. The park is also famous for its many monuments that remind us of Yokohama's rich exchange with foreign countries, such as the "Statue of the Girl with Red Shoes" that many people would be familiar with from the nursery rhyme "Akai Kutsu", "The Indian Drinking Fountain" donated by the local Indian community, and "The Guardian of Water" donated by Yokohama's sister city, San Diego.

☎ **045-671-3648** (Yokohama City Parks Authority)
 ¥ Free admission ⌚ Free admission ☒ None

You can use the elevators from the parking lot in the basement and first floor to World Square (rooftop). Wheelchairs (5 available; 09:00-16:30) are available for rent to users of the Yamashita Park parking lot.

THE WHARF HOUSE Yamashita Park

Required time
60
minutes



There are cafe, restaurant, and store selling Yokohama souvenirs and original goods as well as picnic sets to enjoy in the park. On the open terrace, you can enjoy a relaxing footbath and a barbecue cooked on an authentic grill while enjoying a view of the ocean.

☎ **045-228-7737**
 ¥ Free admission
 ⌚ <CAFE> 09:00 to 17:00
 <RESTAURANT> 17:00 to 22:00
 <BBQ> 11:00 to 22:00 (Open: March-November)
 <Footbath terrace> 10:00 to 21:00
 <SHOP> 10:00 to 19:00

A diaper changing seat is available as are a hot water system and a nursing room, so even visitors with young children can enjoy themselves. There are no steps in the stores enabling visitors to move smoothly.

Osanbashi